

How to improve your supply chain communication by implementing **sector use maps**

Legislation

In accordance with the REACH Regulation, chemical registrants should prepare a Chemical Safety Assessment (CSA) of the whole lifecycle of a chemical and then communicate it downstream via Exposure Scenarios (ES) attached to the Safety Data Sheet of the substance.

Downstream users, like formulators or users of adhesives and sealants, must take this information on the safe use of mixtures into account in their own documents and adjust their own use conditions accordingly.

If their use is not supported by the Exposure Scenarios shared by registrants, downstream users should make their use known to their supplier.

To assist this process, FEICA has summarised the typical uses, including state-of-the-art use conditions translated into the corresponding use descriptors, in the FEICA use maps.

Advantages

- Implementing FEICA use maps in the European Chemicals Agency (ECHA's) CHEMical Safety Assessment and Reporting tool (CHESAR's) format to perform the Chemical Safety Report (CSR) saves time for the registrants
- Communication costs (between a registrant and his individual customers) will be markedly reduced
- Suppliers can be reassured that their customers will not find another supplier who provides an ES that covers their use
- Registrants' customers will receive information tailored to their applications
- Exposure Scenarios will be easily usable by downstream users

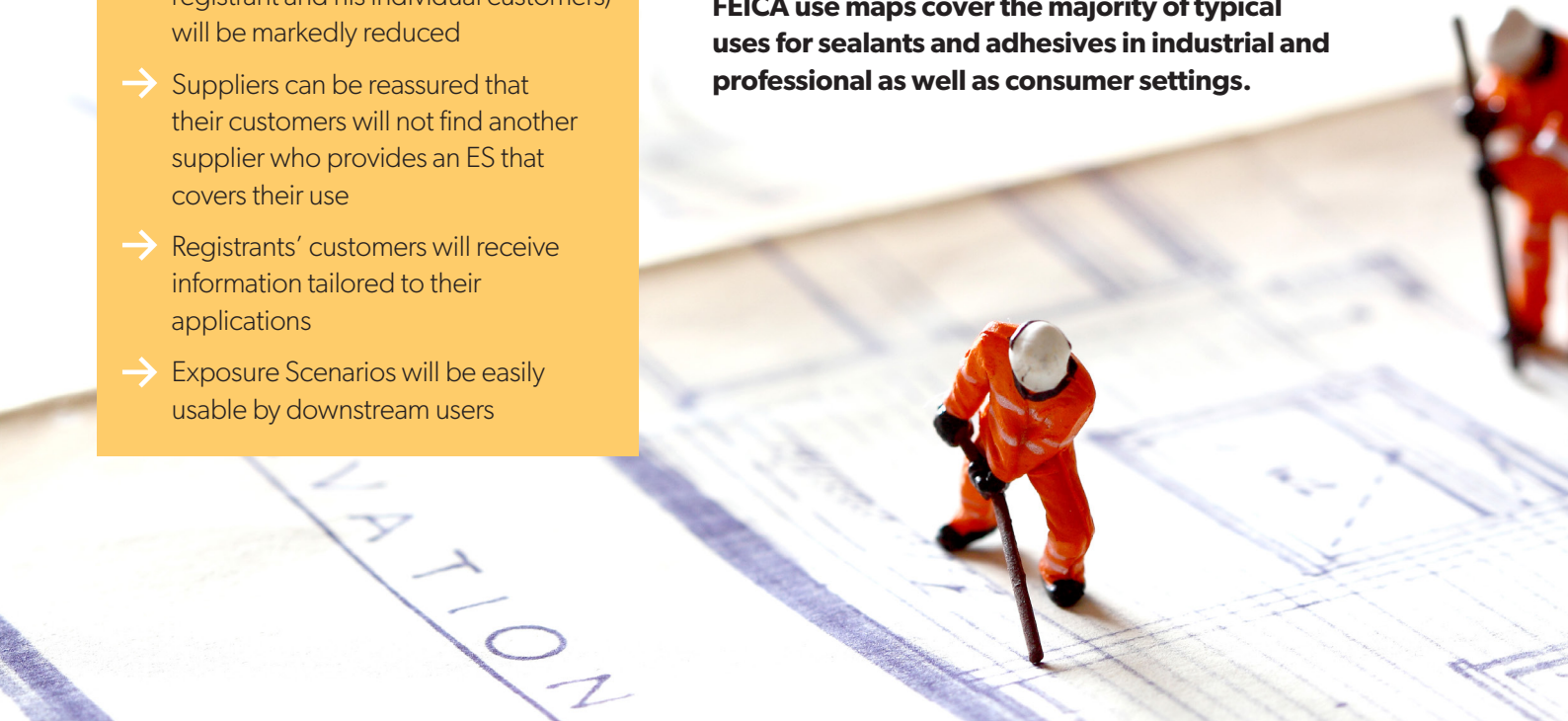
What are use maps?

FEICA use maps describe the **common uses** of the adhesives and sealants sector, arranged by life cycle stage.

FEICA use maps are composed of the following four elements:

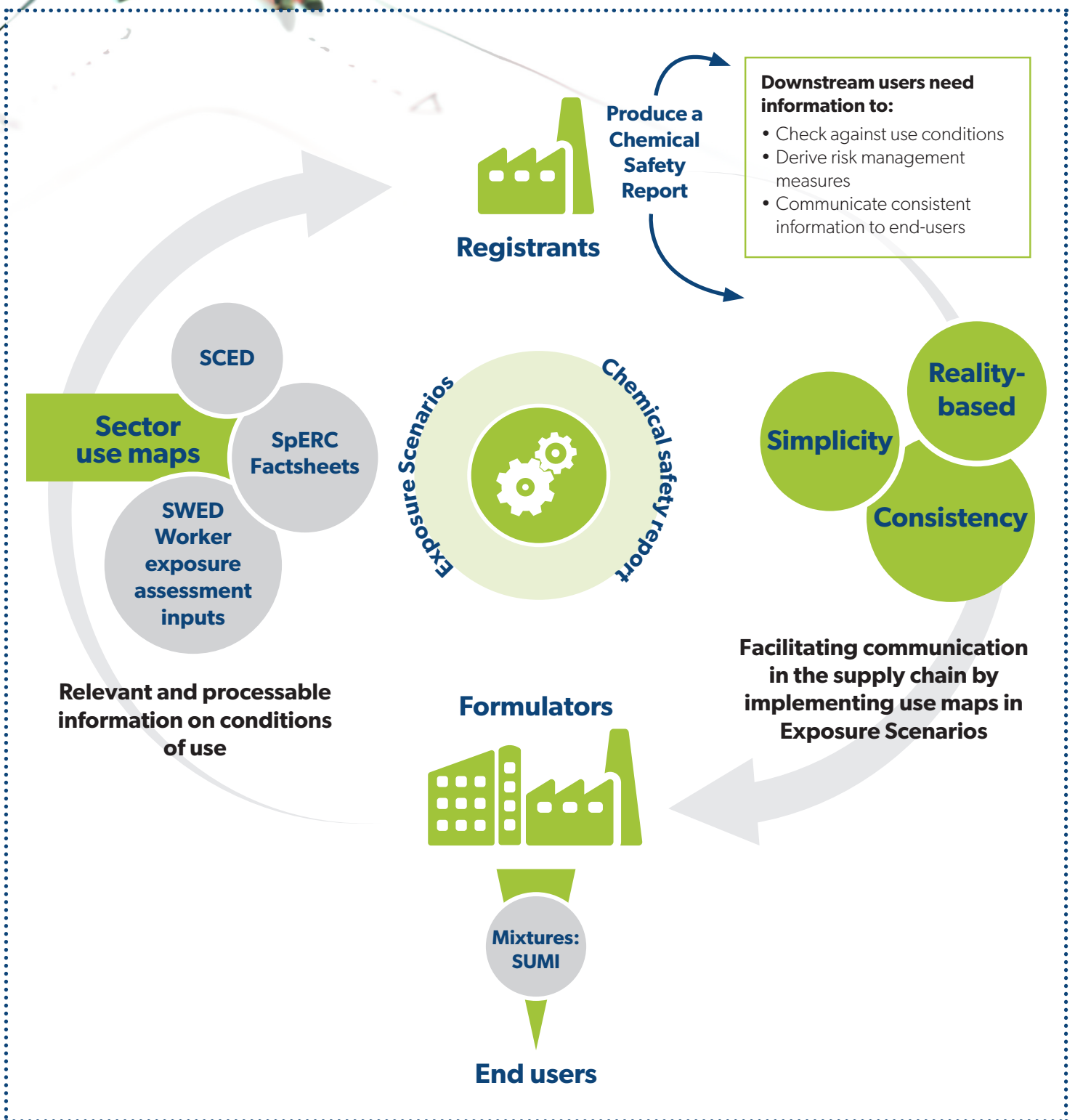
- Use map document
- Sector-specific Worker Exposure Descriptions (SWEDs)
- Specific Environmental Release Categories (SpERCs)
- Specific Consumer Exposure Determinants (SCEDs).

FEICA use maps cover the majority of typical uses for sealants and adhesives in industrial and professional as well as consumer settings.





If you are a registrant, you must undertake a Chemical Safety Assessment and develop the "ES" for the selected substance(s) by using the sector use map.



FEICA use maps and more information available via: www.feica.eu/our-priorities/reach/safe-use-mixtures

Other available resources

Use map library of ECHA:
www.echa.europa.eu/csr-es-roadmap/use-maps/use-maps-library

